

Supported model

- C4-L-FSW Control4 Lux Fireplace Switch

Introduction

The Control4® Lux Fireplace Switch operates independently or as part of a Control4 home automation system and can be used to control low voltage switched loads like millivolt fireplace controls, 12VAC and 24VAC control (doorbell, sprinkler, HVAC), and low power DC switching systems (swimming pool covers, 12V solar, wind, and battery systems). It installs in a standard wall box using typical wiring standards and communicates to the Control4 system using a wireless connection.

Box contents

- Control4 Lux Fireplace Switch
- Warranty card
- Temporary rocker button
- Control4 Lux Fireplace Switch Installation Guide (this document)

Mounting Plates required

The Control4 Lux Fireplace Switch **requires** a faceplate and mounting plate designed to fit your install (1 gang, 2 gang, etc.) and are required before you install the fireplace switch. Part numbers for faceplates and mounting plates:

- Lux Faceplate and Mounting Plate, 1 gang (C4-L-FP1-XX)
- Lux Faceplate and Mounting Plate, 2 gang (C4-L-FP2-XX)
- Lux Faceplate and Mounting Plate, 3 gang (C4-L-FP3-XX)
- Lux Faceplate and Mounting Plate, 4 gang (C4-L-FP4-XX)

Specifications and supported load types

Model number	C4-L-FSW
Power requirements	120-240V AC ±10%, 50/60 Hz
Neutral required	Yes
Power consumption	120V: 0.68W all LEDs Off, 0.87W all LEDs On 240V: 1.66W all LEDs Off, 1.86W all LEDs On
Load types and ratings	
Supported load types	Low voltage relay control
Maximum switched load	24VAC / 240W 28VDC / 10A
Environmental	
Operational temperature	0 to 40 °C (32 to 104 °F)
Humidity	5% to 95% non-condensing
Storage	-20 to 70 °C (-4 to 158 °F)
Miscellaneous	
Control communications	Zigbee, IEEE 802.15.4, 2.4 GHz, 15-channel spread spectrum radio
Lighting scenes per device	127 maximum
Actions per device	15 maximum per lighting scene
Wallbox volume	5.75 in³ (94.2 cc)
Weight	0.05 kg (0.12 lb.)
Shipping weight	0.08 kg (0.18 lb.)
Compatible color kit	C4-L-CKUDIMSWITCH-XX

Warnings and considerations

- !

WARNING! Turn OFF electrical power before installing or servicing this product. Improper use or installation can cause **SERIOUS INJURY, DEATH** or **LOSS/DAMAGE OF PROPERTY**.

ATTENTION! Coupez l'alimentation électrique avant d'installer ou de réparer ce produit. Une mauvaise installation ou utilisation peut entraîner des blessures graves, décès ou perte / dommages à la propriété.

WARNING! This device must be protected by a circuit breaker (20A max).

ATTENTION! Cet appareil doit être protégé par un disjoncteur (20A max.)

WARNING! Ground this device in accordance with the National Electric Code (NEC) requirements. DO NOT rely solely upon the mounting bracket's contact with a metal wall box for adequate grounding. Use the mounting plate's ground wire to make a secure connection to the safety ground of the electrical system.

ATTENTION! Cet appareil doit être en conformité avec le Code national de l'électricité (NEC). Ne comptez pas uniquement au contact de la plaque avant avec un boîtier mural métallique pour la mise à la terre adéquate. Utilisez cet appareil à la terre de l'appareil pour établir une connexion sécurisée au système électrique.

IMPORTANT! This device must be installed by a licensed electrician in accordance with all national and local electrical codes.
- !

IMPORTANT! If you are unsure about any part of these instructions, consult a qualified electrician.
- !

IMPORTANT! Use this device only with copper or copper-clad wire. Do not use aluminum wiring. This product has not been approved for use with aluminum wiring.
- !

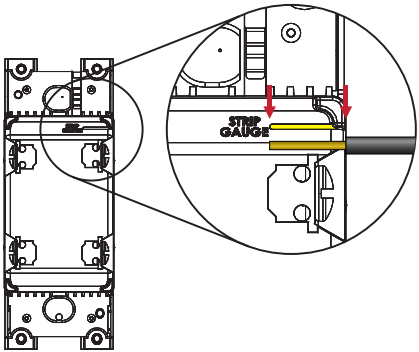
IMPORTANT! Using this product in a manner other than outlined in this document voids your warranty. Further, Snap One is NOT liable for any damage incurred with the misuse of this product. See "Troubleshooting."
- !

IMPORTANT! Do NOT use a power screwdriver to install this device. If you do, you may overtighten the screws and strip them. Also, overtightening the screws may interfere with proper button operation.
- !

IMPORTANT! This is an electronic device with intricate components. Handle and install with care!

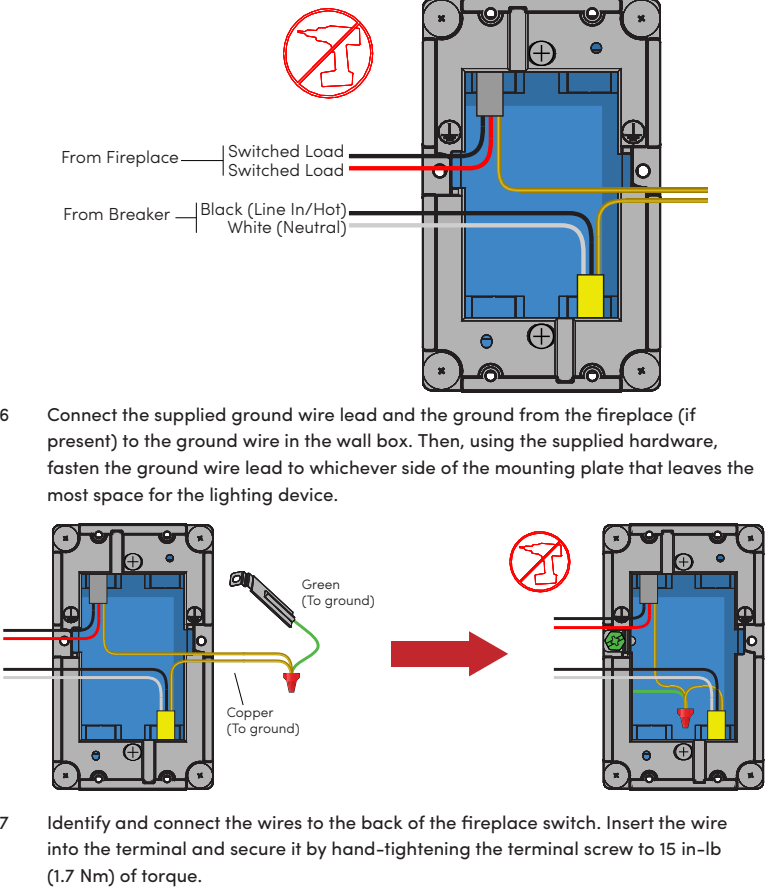
Installation instructions

- Ensure that the location and intended use meet the following criteria:
 - Do not exceed the switched load rating requirements of the fireplace switch. Refer to the load ratings in the specifications above for details.
 - The range and performance of the wireless control system is highly dependent on the following: (1) distance between devices; (2) layout of the home; (3) walls separating devices; and (4) electrical equipment located near devices.
- Turn off the local electrical power by either switching off the circuit breaker or removing the fuse from the fuse box. To ensure the wires do NOT have power running to them, use an inductive voltage detector.
- Prepare each wire. Wire insulation should be stripped back 1/2 of an inch (13 mm) from the wire end. You can use the strip gauge on the back of the fireplace switch to check the proper distance.

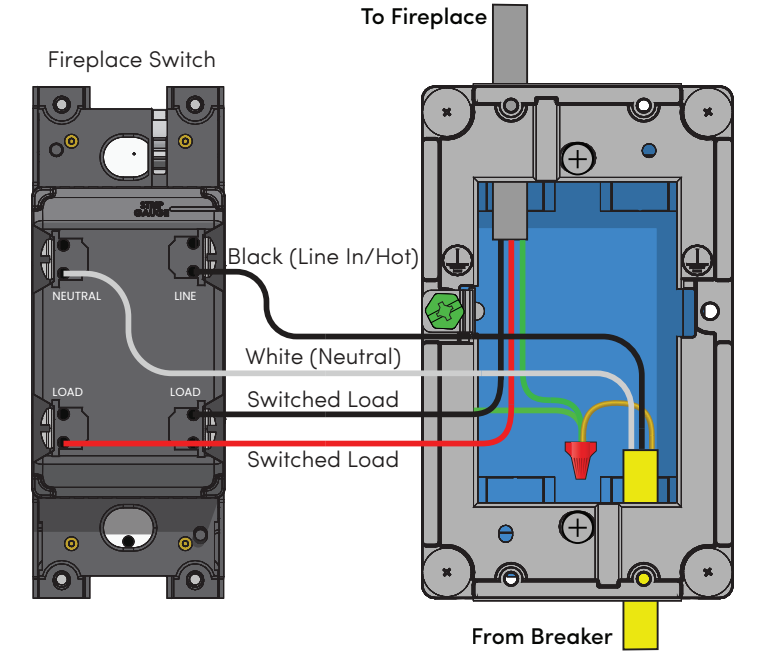


- Identify your wiring application, and then see the appropriate wiring diagram in the *Sample Wiring Configurations* section below.
- ✓

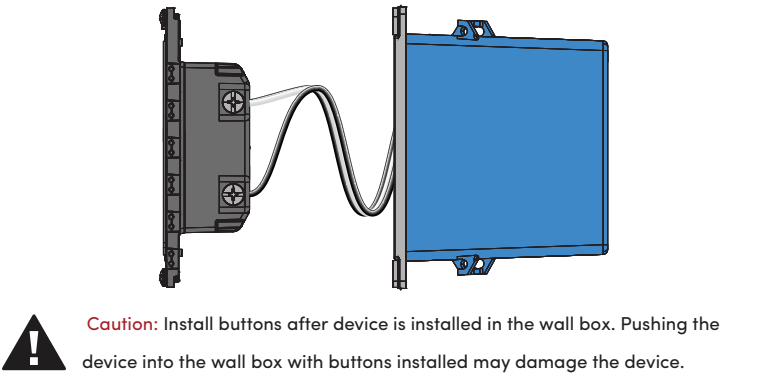
IMPORTANT! As described in the section *Warnings and Considerations*, DO NOT rely solely upon the mounting plate's contact with a metal wall box for adequate grounding
- Using a *manual screwdriver*, install the mounting plate to the wall box. **Do not overtighten the screws**. Pull the rest of the wires through the mounting plate.



NOTE: You must use the same size and type of wire in each terminal for proper connection.



- Fit the wires back into the wall box. Bend the wires in a zigzag pattern so that they easily fold into the wall box.



- Insert the device into the mounting plate and fasten it with screws. Overtightening can warp the device, causing mechanical malfunction and difficulty mounting the buttons and faceplate.
- Install the temporary rocker onto the device. The back of the rocker has two arrows to indicate which end goes up. Line up the button's tabs to the device's pegs. Hold one side of the rocker in place over the device and snap the other side into place.
- 💡

TIP: This device ships with a temporary button for basic operation until finished. Engraved buttons can be ordered. To remove the temporary buttons and install the engraved buttons, see the *Control4 Lux Button Installation Guide* (ctrl4.co/lux-butn-ig). Blank unengraved buttons are also available.
- Install the Control4 Faceplate following the instructions in the *Control4 Lux Faceplate Installation Guide* (ctrl4.co/lux-fp-ig).
- Turn on power at the circuit breaker or replace the fuse from the fuse box.



Operation and configuration

On initial power up, all status LEDs on the fireplace switch will illuminate green indicating that the device has power. To set up this fireplace switch for use with a Control4 system, refer to the *Composer Pro User Guide*.

To operate this fireplace switch as a stand-alone device if it is not programmed into a Control4 system:

- Click the top button to turn the load on.
- Click the bottom button to turn the load off.

Button tap sequences

The button tap sequences are defined in the table below. Button tap sequences that require a single button use the **top** button. For example, the factory reset sequence is **9 taps** on the **top**, then, **4** on the **bottom**, and then, **9** on the **top**.

Function	Button Sequence
Identify	4
Zigbee channel	7-4-7
Reboot	15
Factory reset	9-4-9
Leave mesh and reset	13-4-13

Troubleshooting

- If the light does not turn on:
- Ensure at least one LED on the face of the fireplace switch is lit.
 - Ensure the light bulb is not burned out and is screwed in tightly.
 - Ensure that the circuit breaker is not turned OFF or tripped.
 - Check for proper wiring (see *Sample Wiring Configurations*).

LED status information



Fault status

- ✖ 6 Temperature fault
- ✖ 8 Bootup power / wiring fault
- ✖ 1 Incorrect product fault
- ✖ 3 Self-test fault
- ✖ 2 Manufacturing ID fault

Zigbee status

- Not identified
- ★ Identifying
- Found Zigbee mesh
- Did not find Zigbee mesh
- Joined Zigbee mesh

Care and cleaning

- Do NOT paint the fireplace switch or its faceplate.
- Do NOT use any chemical cleaners to clean the fireplace switch.
- Clean surface of the fireplace switch with a soft damp cloth as needed.

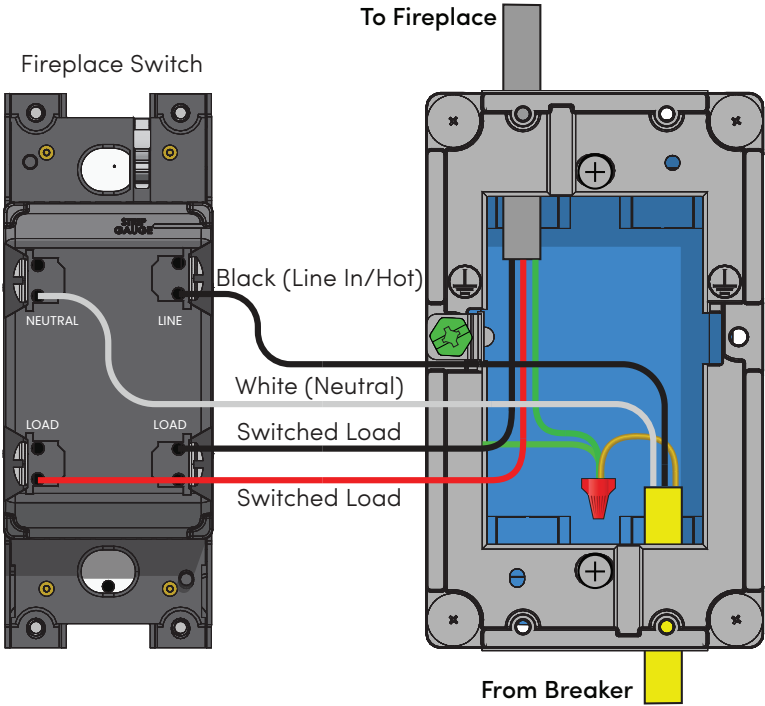
Warranty and legal information

Find details of the product’s Limited Warranty at snapone.com/legal or request a paper copy from Customer Service at 866.424.4489.

Find other legal resources, such as regulatory notices and patent information, at snapone.com/legal.

Sample wiring configurations

Single device location



For the latest version of this guide and to view additional materials, open the URL below or scan the QR code. Your device must be able to view PDFs.

LATEST VERSION OF THIS GUIDE



ctrl4.co/lux-fsw-ig

CONTROL4 LUX QUICK START



ctrl4.co/lux-qs

CONTROL4 LUX WIRING GUIDE



ctrl4.co/lux-wiring